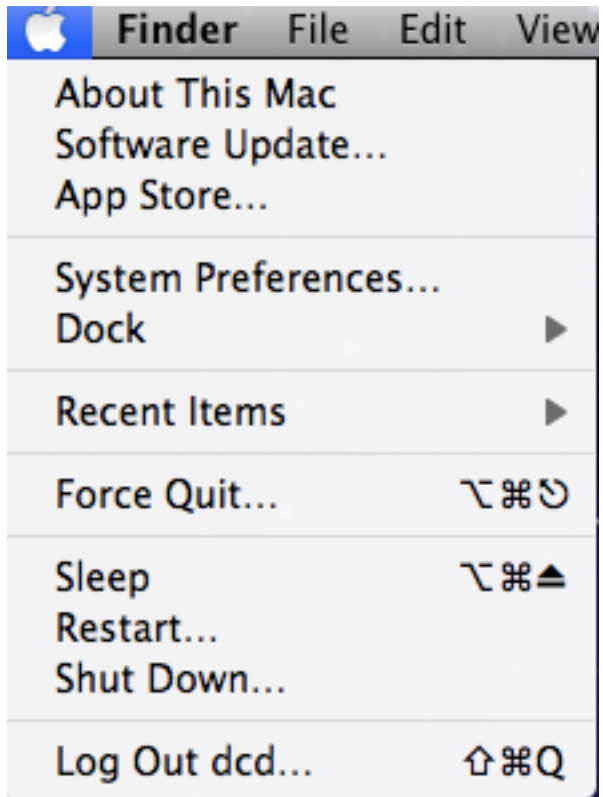


Connecting to Ithaca from Snow Leopard

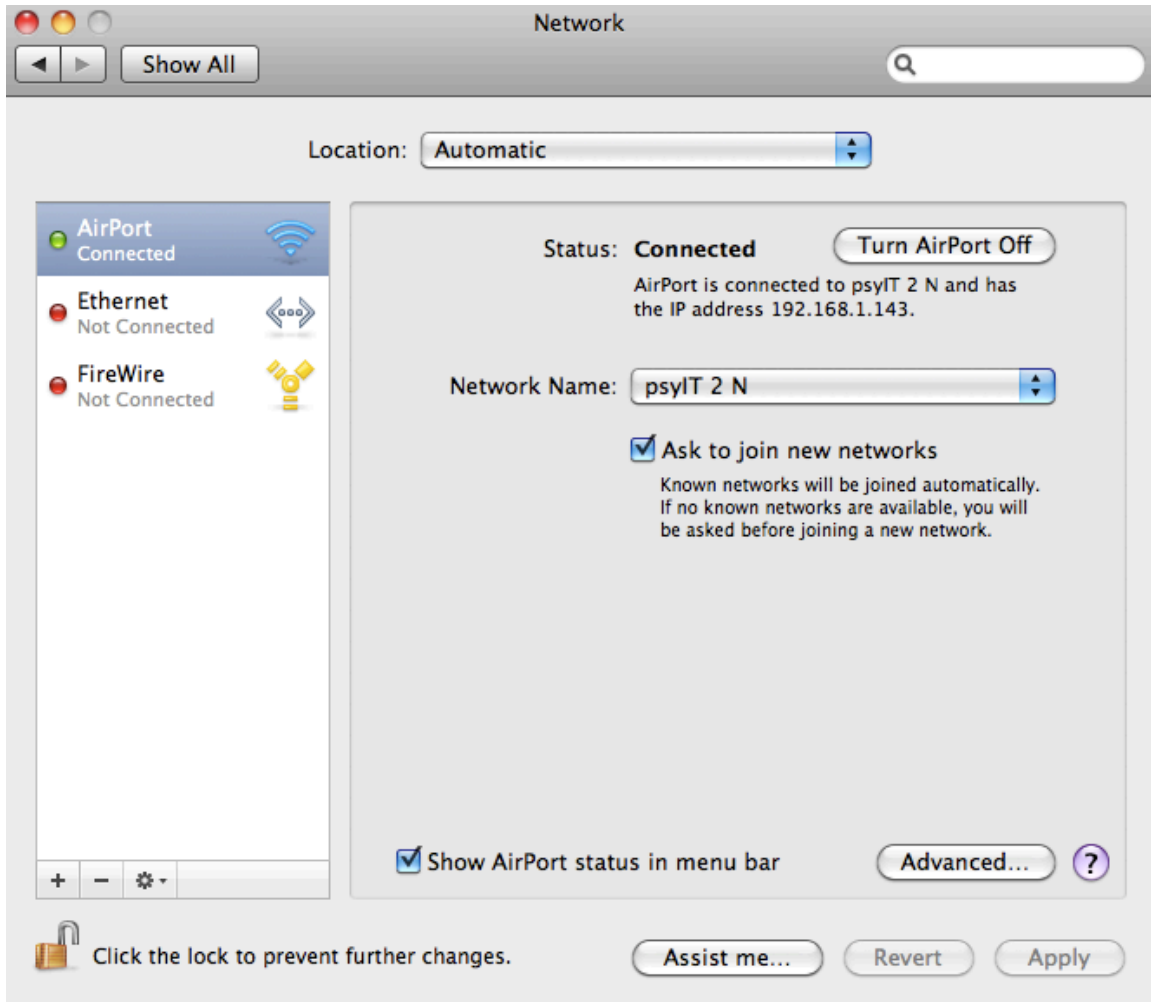
1. Go to System Preferences.



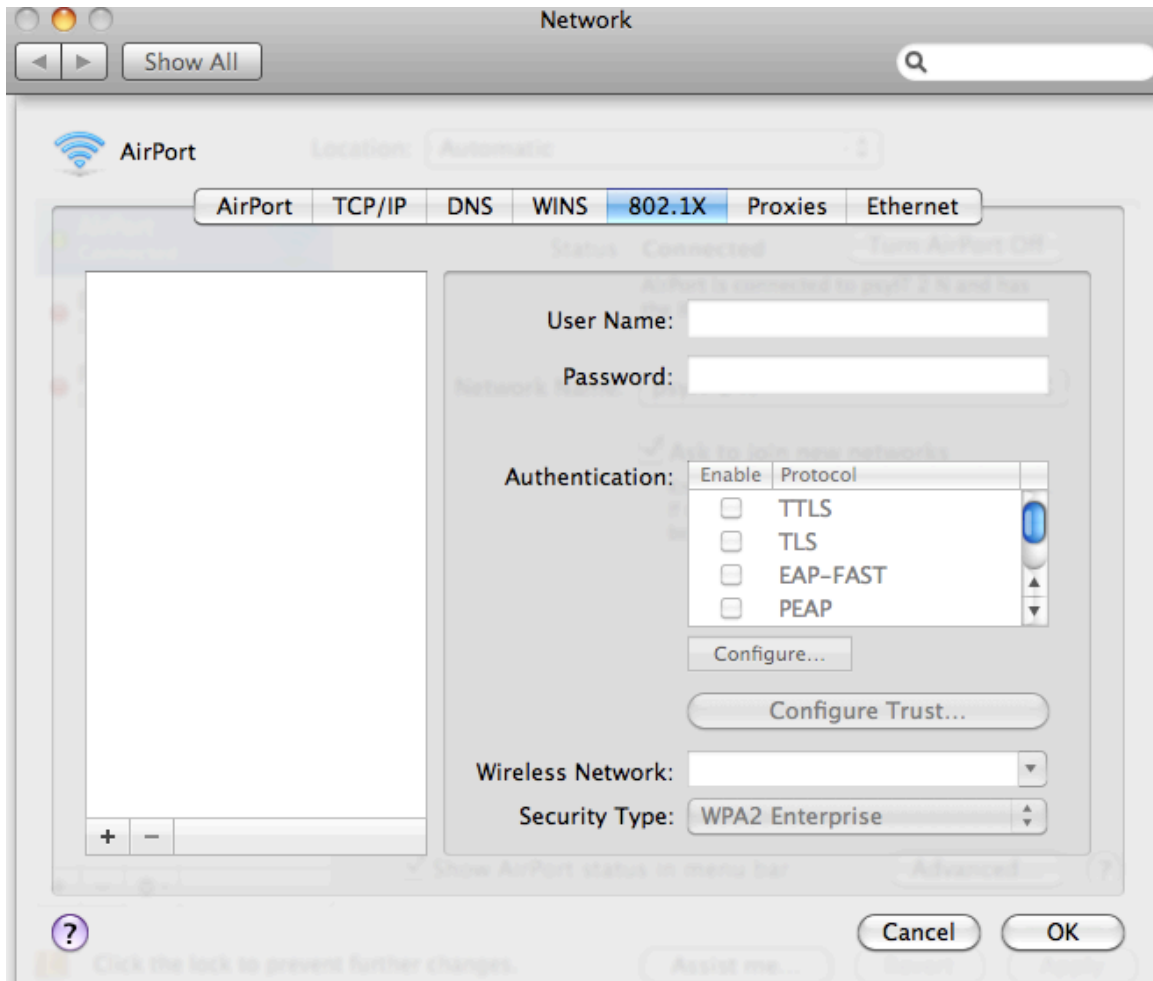
2. Click on Network



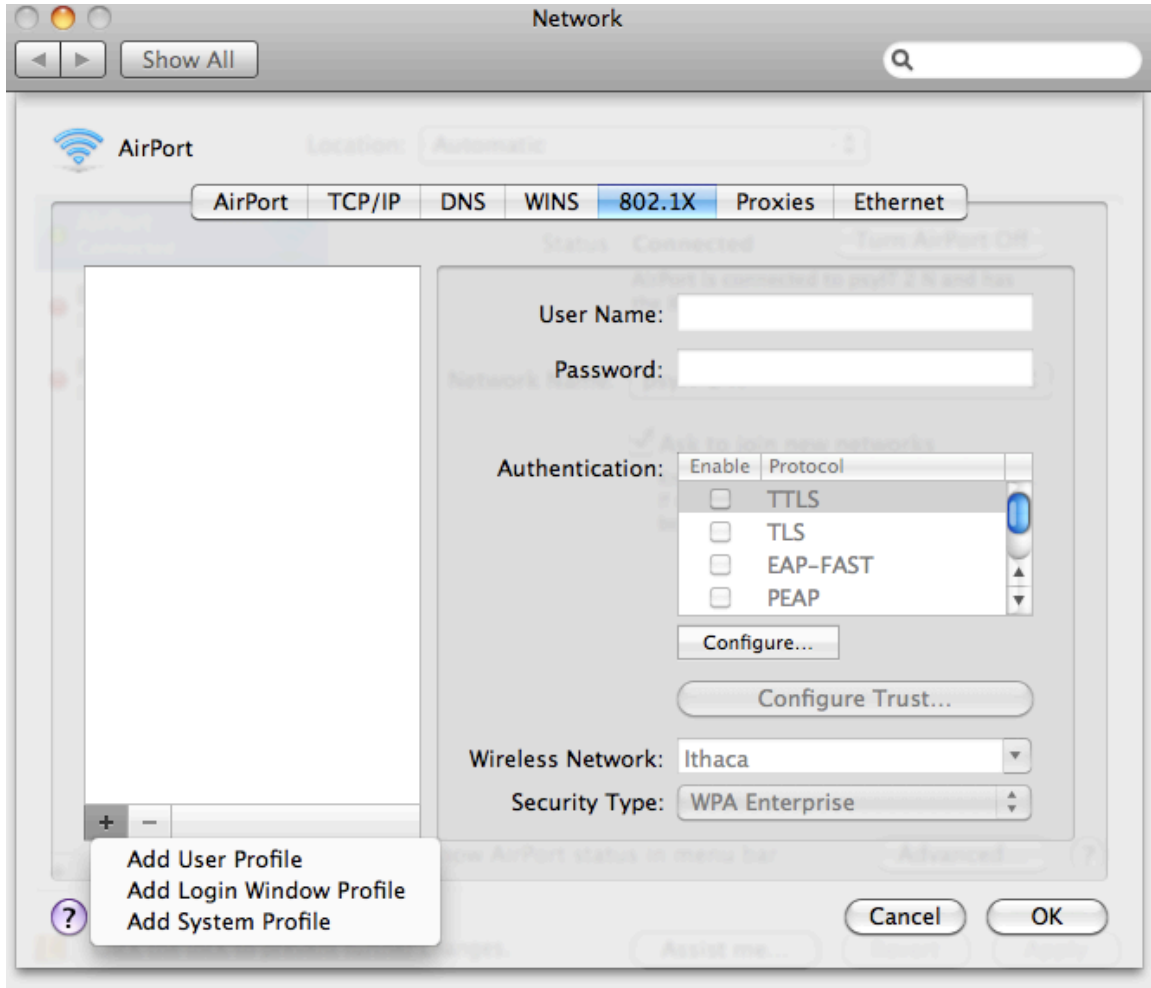
3. Make Sure your Airport connection is selected (airport must be turned on) and click on advanced.



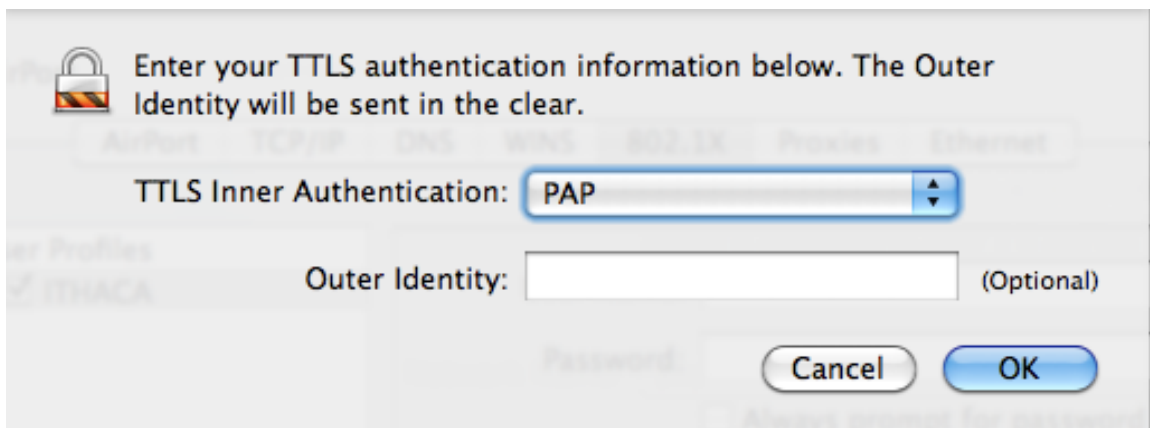
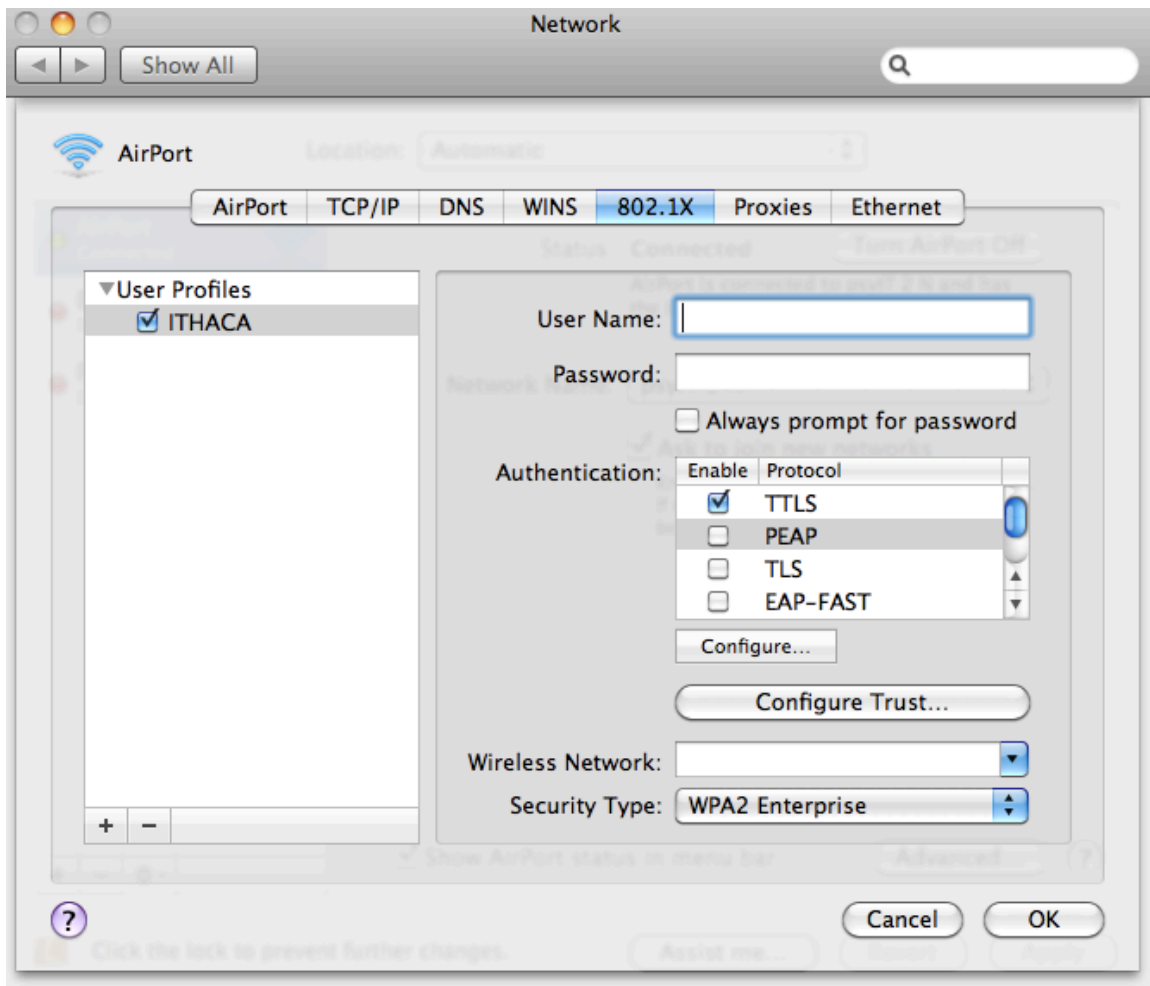
4. Go to the 802.1X tab.



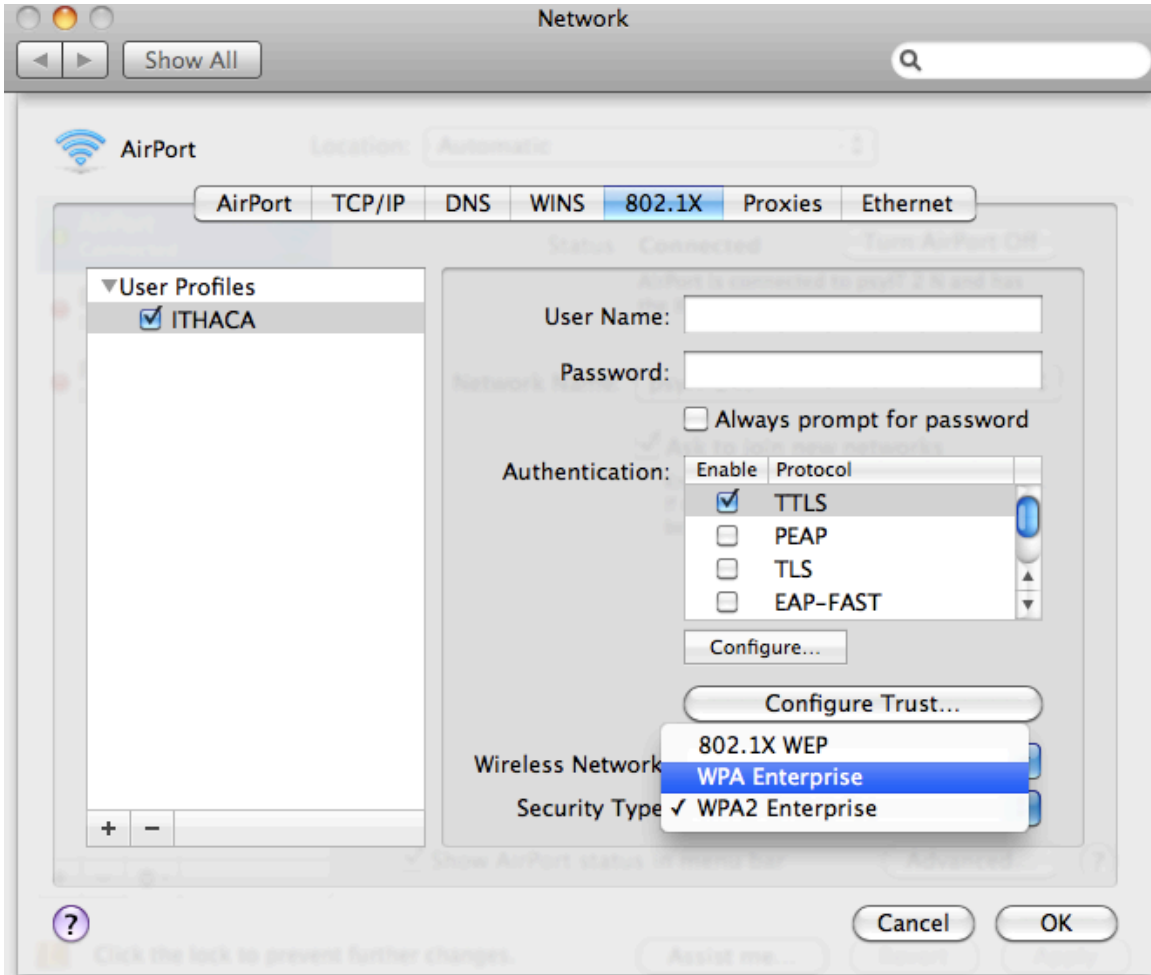
5. Click on the Plus (+) button to add User Profile.



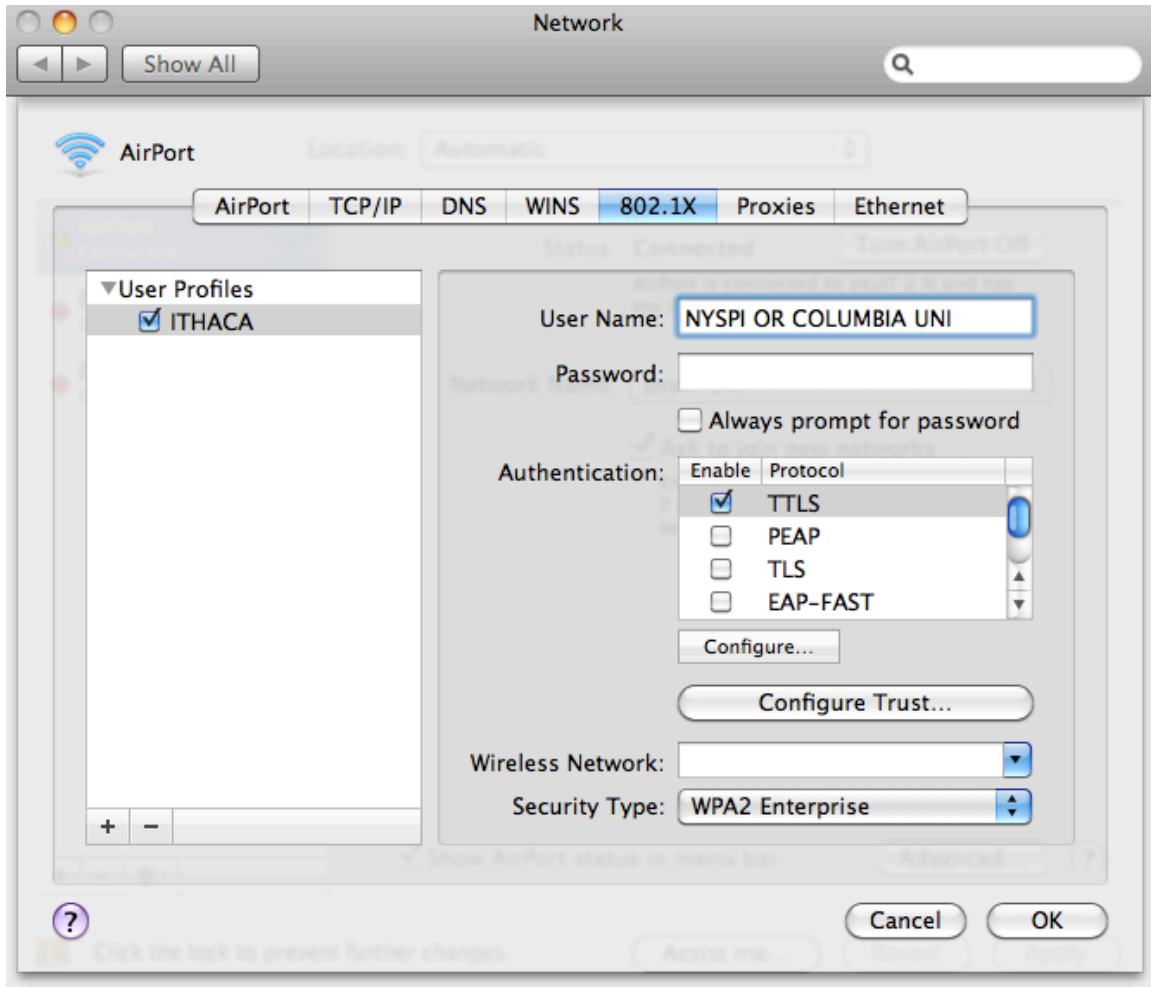
6. Enter Ithaca for the profile name. Make Sure TTLS is the only protocol selected and hit the configure button. Select PAP from the TTLS Inner Authentication Drop Down. Hit Ok.



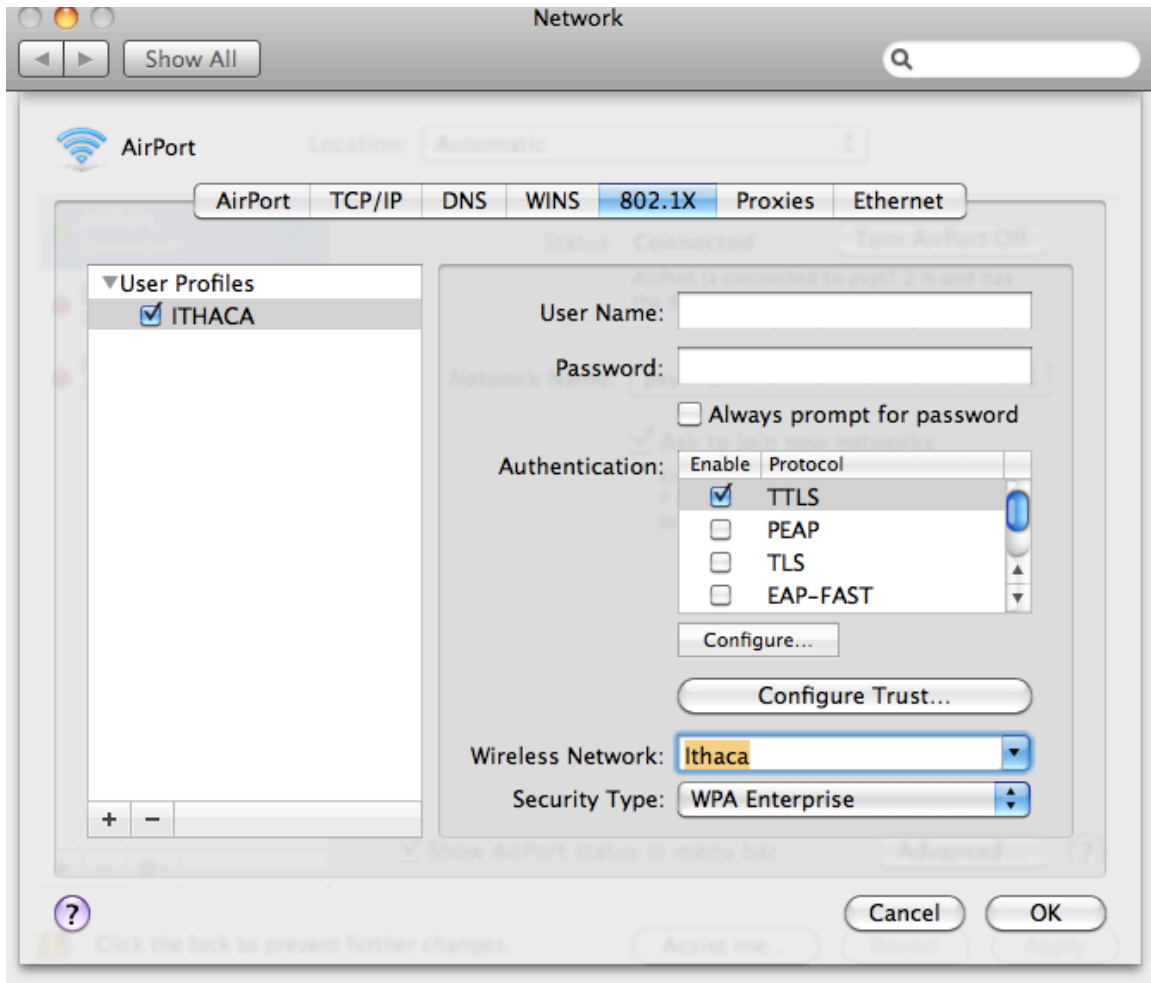
8. Set the Security Type to WPA Enterprise.



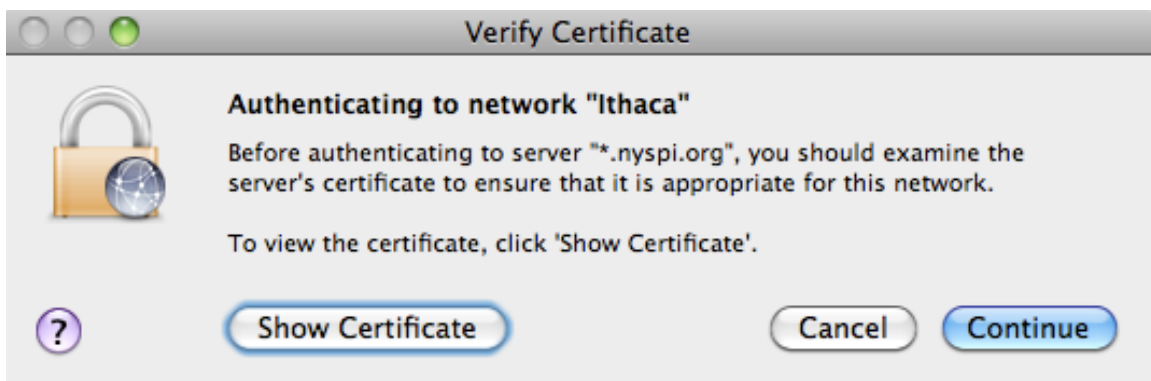
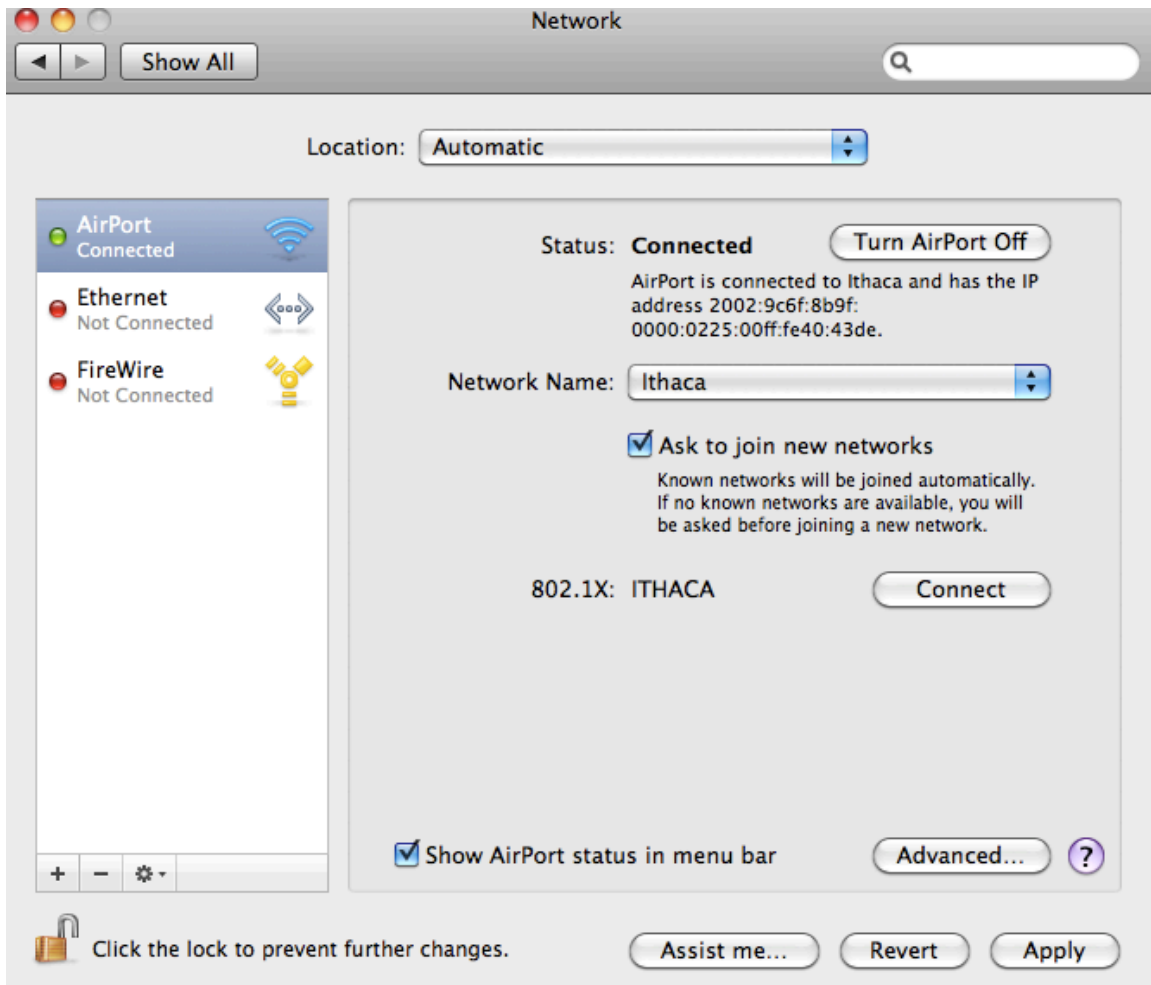
9. ENTER YOUR NYSPI EXCHANGE (OUTLOOK) OR COLUMBIA UNI IN THE USERNAME FIELD AND TYPE IN YOUR PASSWORD.



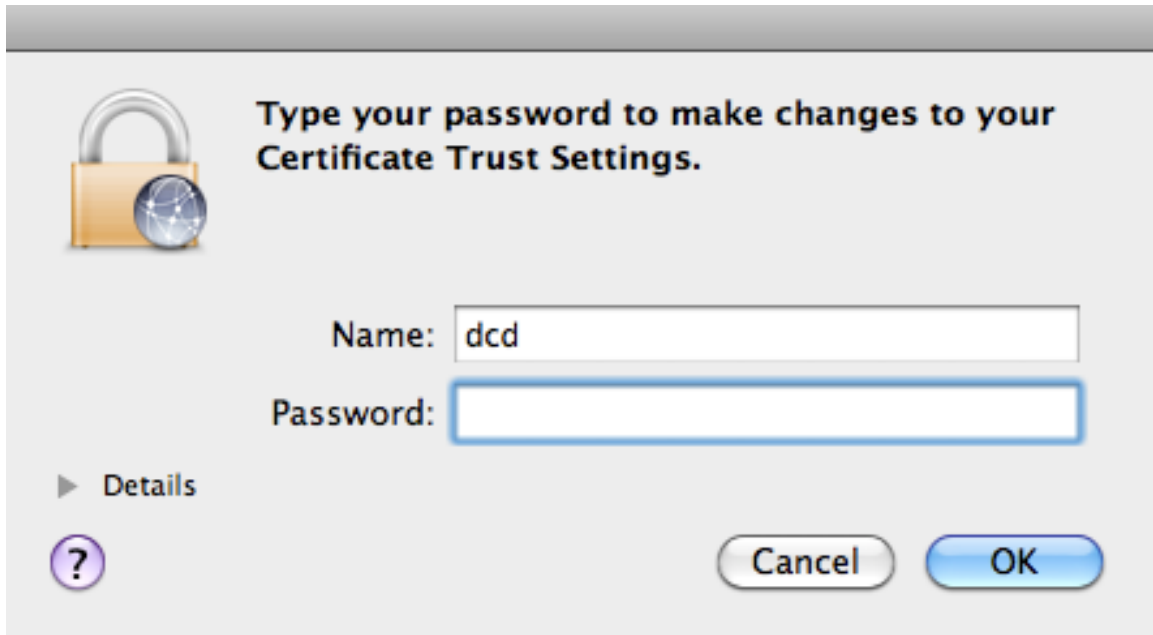
10. Go to the Wireless Network field and select Ithaca from the drop down menu. Hit ok.



11. Make Sure the Network Name is set to Ithaca and hit the Connect Button.
Click Continue to accept the certificate.



12. When prompted type in your Password to accept the changes. Open a web browser and verify you can get online.



The image shows a Windows-style dialog box titled "Type your password to make changes to your Certificate Trust Settings." The dialog features a lock icon on the left. It contains two text input fields: "Name:" with the value "dcd" and "Password:" which is currently empty. Below the fields are "Cancel" and "OK" buttons. A "Details" link with a right-pointing triangle is located to the left of the "Password:" field. A help icon (a question mark in a circle) is positioned at the bottom left of the dialog.

Type your password to make changes to your Certificate Trust Settings.

Name:

Password:

▶ Details

