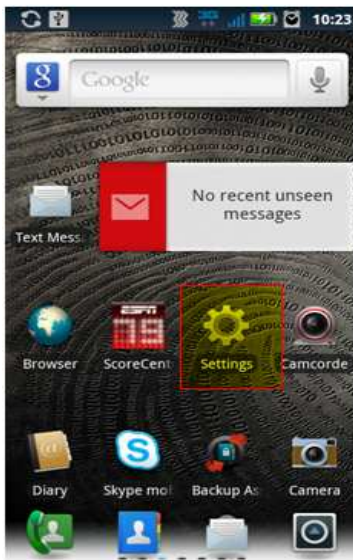


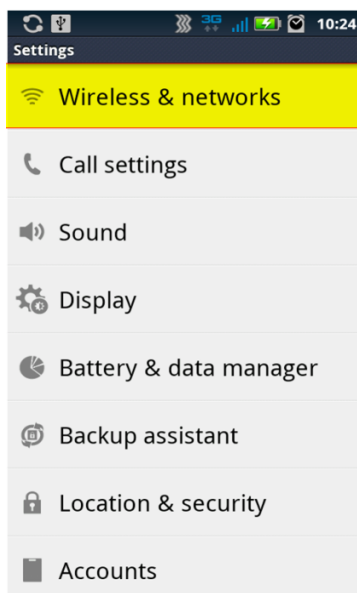
## Connecting to ITHACA from Droid 2

Android Version 2.3.3

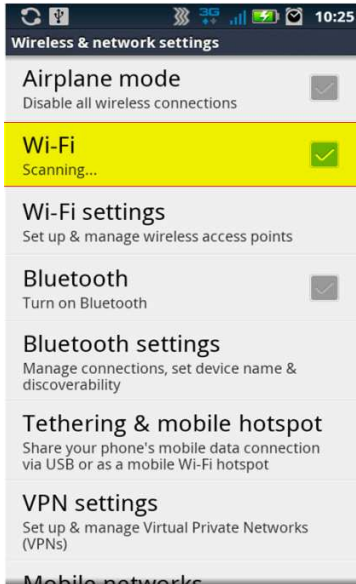
1. Open the Settings Page.



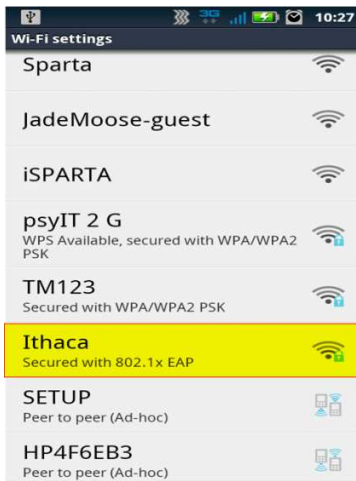
2. Go to Wireless and Network.



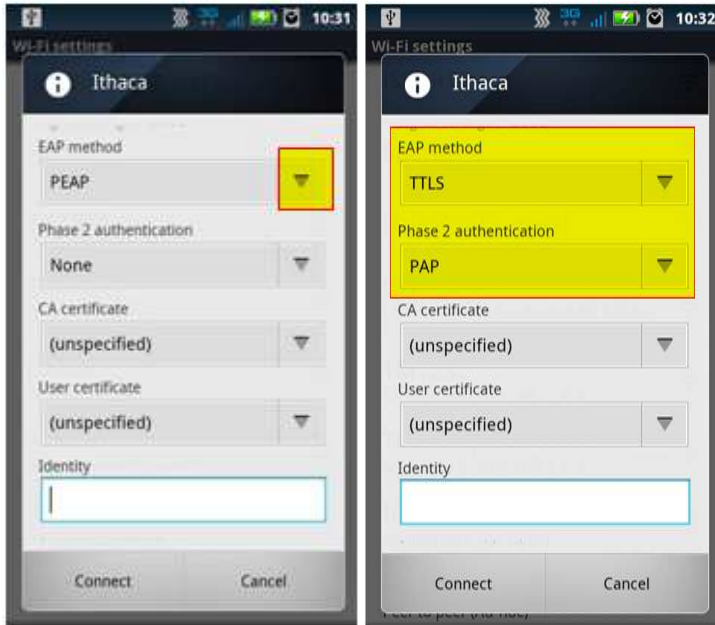
3. Make sure Wi-Fi is turned on.



4. Select ITHACA.



5. Hit the Drop down button next to EAP Method and choose TTLS. For the Phase 2 Authentication hit the drop down button and choose PAP



6. In the Identity field type in your Exchange Username. DO NOT ENTER ANY INFORMATION IN THE ANONYMOUS IDENTITY FIELD. Type in your Exchange password and hit Connect. Once connected open a browser and verify you can go online.

